



RESOURCE WORK CO-OPERATIVE

ANNUAL REPORT

TABLE OF CONTENTS



- 02 STATEMENT FROM BOARD
- 03 CO-OPERATIVE OPERATIONS
- 04 OUR STRATEGIC DIRECTION
- 05 OUR GROWTH
- 06 BALANCE SHEET
- 07 PROFIT AND LOSS
- 08 FUN FACTS
- 09 OUR PEOPLE

The background of the entire page is a collage of various electronic circuit boards, including motherboards, RAM modules, and other components, some of which are partially obscured by the text blocks.

It has been another busy and amazing year for Resource Work Cooperative.

During this year we have continued to increase our sales of recovered resources, provided more employment and reduced waste to landfill. We have successfully expanded our partnership with the CoH tip and continue to explore other opportunities to work with them to further reduce waste.

We continue to look to the changes in state and national waste strategies for opportunities to contribute to waste reduction.

Our education program continues to reach out into the community promoting waste reduction and the Resource Work Co-operative as a not for profit social enterprise.

We have done this after a challenging few years covering onsite flooding, the covid pandemic and a fire. All of these had huge impacts on our operations.

While the South Hobart Tip Shop returns to full capacity three years after the fire affecting our drop-off and processing areas, our biggest challenge is now the rising cost of operations.

Now more than ever we need people to support buying second hand first and recycling with us!

Thank you all for your continued support.

Julian Giddings

On behalf of Da' Board

STATEMENT FROM THE (MOTHER)BOARD

At Resource we are super proud that we are a Workers Cooperative.

You may ask why this fanfare!?!

Well there are a bunch of reasons.

Our workers own the company! We all own it together! So we all get to have a say in how it's run and what it does.

Unlike most types of business, making money isn't our main aim. Our main aims are to minimise waste, promote waste minimisation, and to create fair employment. So any profit we make doesn't go to an owner or shareholders, it goes back into doing a better job of our 3 aims.

And how well do we do at these aims at the moment?

In the last financial year, we saved close to 1000 tonnes of waste going to landfill, while providing jobs for 39 people, and running 79 educational activities or workshops, tours or talks, with 1148 attendees total. 20% of our workers have been working here for over 10 years!

Resource is part of a global movement of people who are trying to make the world a better place by using a business structure designed to be kinder to the people and the planet. There is masses of inspiring information about Cooperatives online if you'd like to know more.

We have undertaken a significant amount of work in developing a strategic plan to assist the cooperative in moving forward in an ever changing landscape of waste and resource recovery. Led by an internal working group and the assistance of an external consultant we are mapping out how Resource can better achieve our core aims for the next 7 years, taking us to a critical date of 2030, where the City of Hobart has ambitious goals to have zero waste to landfill. Our strategic plan will be finalised by early 2024 to allow us to prepare a budget for 2024-25 that incorporates our strategy. Stay tuned.

OUR STRATEGIC DIRECTION





OUR GROWTH

At the moment, Resource has 10 main areas. These include the actual Tip Shop, an Online Sales department, our Education Program, the Art From Trash Exhibition, Community Pickups, Scrap and E-Waste processing, fixing up and reselling Computers, testing and reselling Electrical equipment, researching and finding the right homes for Collectables and antiques, and our wonderful Timber Reclamation department!

Each of our departments are working innovatively and creatively to contribute their bit to the overall mission of Resource.

For example, in the 23-24 Financial year, in addition to recycling almost 60,000kg of e-waste and scrap metal, our Scrap and E waste Department reached out and formed several new working relationships.

One with the Huon Valley Council, collecting and processing e-waste from their site in the south. And one with Chemist Warehouse, directly collecting and processing a number of loads of e-waste. This waste included a large volume of high-capacity hard drives which were securely erased and resold.

Partnerships like this are an excellent way for Resource to fulfil its mission by keeping precious e-waste items out of landfill. Hopefully they will grow in the future!

Resource's Scrap and E-waste team also cut up, processed and recycled the fire damaged steel from our old shed that burnt down several years ago.

Excellent work team!

Balance Sheet

As of June 2023

Assets	
Cash at Bank	\$833,590.66
Other Current Assets	\$56,174.39
Fixed Assets	\$82,918.06
Total Assets	\$972,683.11
Liabilities	
Current Liabilities	\$128,057.50
Non Current Liability	\$47,158.00
Total Liabilities	\$175,215.50
Net Assets	\$797,467.61
Equity	
Share Capital	\$34.00
Retained Earnings	\$1,089,979.50
Current Earnings	-\$292,545.89
Total Equity	\$797,467.61



Profit & Loss Statement

July 2022 To June 2023

Income	
Sales Revenue	\$1,430,317.43
Donation Revenue	\$1,462.60
Grants	\$15,909.09
Total Income	\$1,447,689.12
Cost Of Sales	
Payment Processing Fees	\$8,596.37
Contractors	\$7,248.37
Postage	\$14,034.47
Total Cost Of Sales	\$29,879.21
Gross Profit	\$1,417,809.91
Expenses	
Employment Expenses	\$1,574,598.52
Admin & General Expenses	\$101,355.99
Tools, Maintenance & Safety	\$51,775.80
Total Expenses	\$1,727,730.31
Operating Profit	-\$309,920.40
Other Income	
Interest Earned	\$14,247.37
Insurance Recovery	\$3,587.42
Total Other Income	\$17,834.79
Other Expenses	
Adjustments	\$460.28
Total Other Expenses	\$460.28
Net Profit/(Loss)	-\$292,545.89



FUN RESOURCE FACTS FOR 22-23 FINANCIAL YEAR

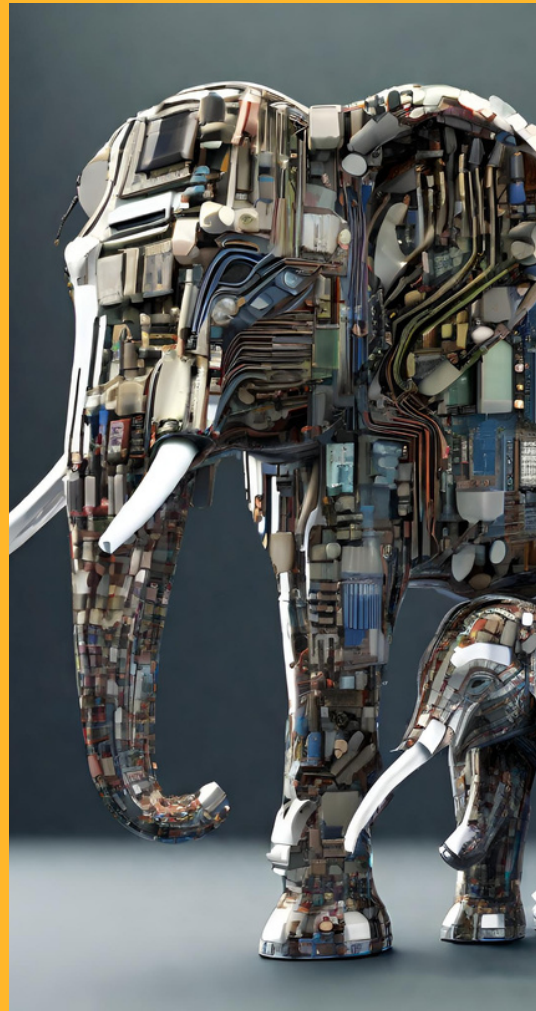
-We processed 5,118Kg of cable which approximates 89.5 km in length; enough to get from the Tipshop to Triabuna by road!

-We put more than 500 desktop computers back in service. If they were all stacked on top of each other, they would make a tower 300m tall! That's more than 4 times the height of the Wrest Point Casino! ($60\text{cm} \times 50 = 300\text{m}$. $300/73 = 4.1$)

-Last year, on average, we had almost 200 customers buy something per day!

-Overall we responsibly recycled a whopping 13,894kg of E-waste and 44,363Kg of Scrap metal. Equalling 58,257Kg!!! That's more than 9 African bush elephants, or more than 14 Indian elephants!

-Overall, we saved 1149 tonnes of material going to landfill! Heavier than 1000 compact SUV's.





OUR PEOPLE





RECYCLE



30 Microbes Rd, South Hobart TAS 7004

Tip Shop: 6224 8669

Office: 6223 3891

<https://resourcetipshop.com>

resource@resource.coopt